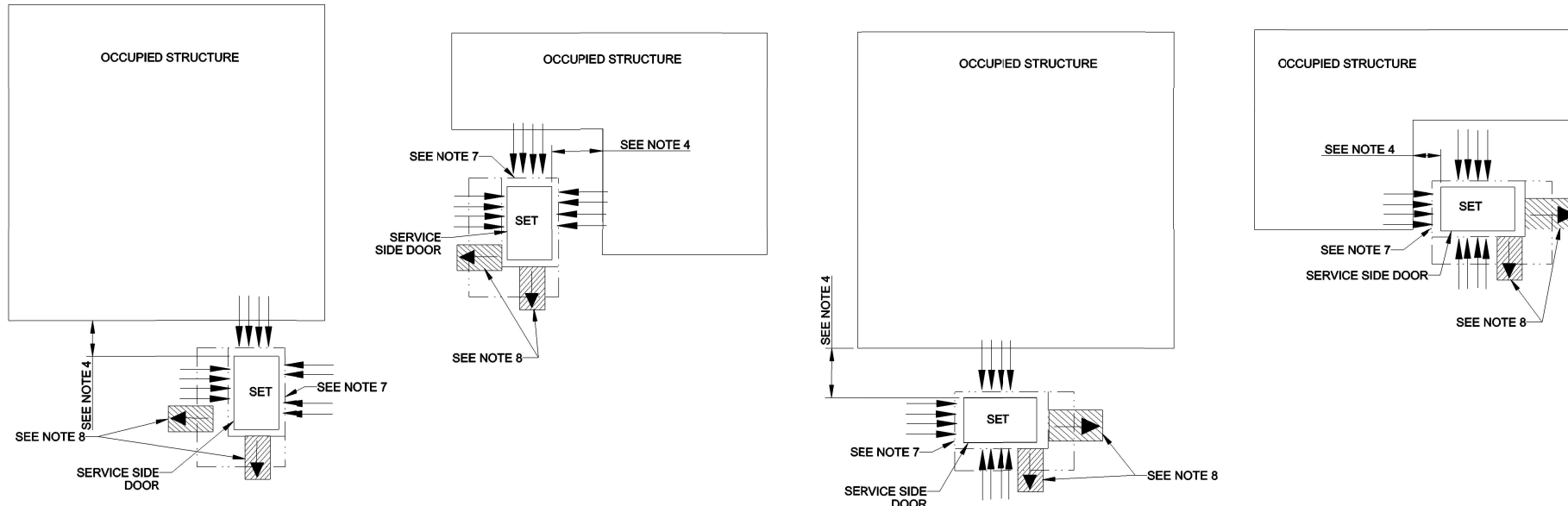


8 7 6 5 4 3 2 1



INSTALLATION GUIDELINES

- 1) EXHAUST IS AIMED AWAY FROM OR PARALLEL TO THE STRUCTURE.
- 2) EXHAUST IS NOT DIRECTED AT PLAY AREAS, PATIOS OR OTHER AREAS WHERE PEOPLE CONGREGATE.
- 3) THE NEAREST WINDOW, VENT, DOOR OR SIMILAR STRUCTURE OPENING IS AT LEAST 5 FEET FROM THE EXHAUST END OF THE GENERATOR.
- 4) GENERATOR SET MUST BE INSTALLED A MINIMUM OF 18 INCHES FROM STRUCTURE PER NFPA 37, HOWEVER, ACTUAL DISTANCE MAY DIFFER BASED ON STATE AND LOCAL CODES.
- 5) WINDOWS & DOORS ON ADJACENT WALLS ARE CLOSED.
- 6) FURNACE AND OTHER SIMILAR INTAKES ARE AT LEAST 10 FEET FROM EXHAUST END OF GENERATOR.
- 7) 4" THICK CONCRETE PAD EXTENDING 6" BEYOND GENSET ON ALL SIDES.
- 8) NO PLANTS, SHRUBS OR OTHER COMBUSTIBLES ALLOWED IN CLEARANCE AREA. (MINIMUM 4 FT. FROM EXHAUST END).
- 9) SENSITIVE PLANTS, PATIO FURNITURE, ETC. ARE AT LEAST 8 FEET FROM EXHAUST END OF SET.
- 10) REFER TO OWNERS MANUAL FOR OTHER INSTALLATION CONSTRAINTS.
- 11) RECOMMENDED SKID ANCHOR - 1/2" HILTI KWIK BOLT TZ CARBON STEEL WEDGE ANCHOR WITH STANDARD WASHER.

24RCLA

| REV | DATE | CHANGE NUMBER | ON COMPOSITE DWGS, SEE PART NO. FOR REVISION LEVEL □ INDICATES PART NUMBERS AFFECTED BY LATEST DRAWING REVISION | BY |
|-----|-----------|---------------|--------------------------------------------------------------------------------------------------------------------|-----|
| - | 22JAN2021 | CT209473 | NEW DRAWING | RVM |
| A | 23JUL2021 | CT213532 | SEE SHEET 1 | RVM |
| B | 29SEP2022 | CT221726 | (A-7) NOTE 8: 4FT WAS 8FT | AAS |
| C | 02NOV2022 | CT223403 | (A-8) NOTE 11 ADDED; SEE SHEET 1 | NCD |
| D | 01DEC2023 | CT231977 | SEE SHEET 1 | NCD |

| | | | |
|-----------------------------------------------------------------------------------------------------------------------------------------|-----|------------------------|-----------|
| UNLESS OTHERWISE SPECIFIED: ALL DIMENSIONS IN MILLIMETERS GENERAL TOLERANCES: XXX ±0.25 XX ±1.0 X ±1.5 ANGLES ± 0°30' | | SURFACE FINISH MAX. | |
| THIRD ANGLE PROJECTION | | | |
| MAJOR DIMENSIONS | | CRITICAL DIMENSIONS | |
| CHARACTERISTICS COMPLY WITH | | | |
| DRAWN BY | RVM | DATE: | 22JAN2021 |
| APPROVED BY | TAS | | |

DO NOT SCALE.
THIS ASSEMBLY OR PART MUST
COMPLY WITH PEP-RML-001.
REFERENCE CAD MODEL FOR
UNSPECIFIED DIMENSIONS.

KOHLER
KOHLER, WISCONSIN 53044

SCALE: 0.06 SHEET SIZE: B SHEET 2 OF 2

TITLE:
DIMENSION PRINT, 24RCLA

DWG NO.: **ADV-9758**

THIS DRAWING IN DESIGN AND DETAIL IS KOHLER CO. PROPERTY AND MUST NOT BE USED EXCEPT IN CONNECTION WITH KOHLER CO. WORK. ALL RIGHTS OF DESIGN OR INVENTION ARE RESERVED.